



# Technical Data Sheet

Effective: 08/12/2020 Supersedes: NA

## Automotive Aftermarket Division

### 3M™ Performance Spray Gun

---

#### 1) Part Numbers

| 3M Part Numbers                              | 3M Part Descriptor                          |
|--|---|
| <b>Gun Kits</b>                              |   |
| 26778  | 3M™ Performance Spray Gun System Gravity    |
| 26832  | 3M™ Performance Spray Gun                   |
| 26878  | 3M™ Performance Industrial Spray Gun System |
| <b>Replacement Parts</b>                     |   |
| 26833  | Pressure Whip                               |
| 26839  | Ball Valve                                  |
| 26840  | Rebuild Kit                                 |
| 26834  | Whip Pin                                    |
| <b>Atomizing Head Refill Kits - Pressure</b> |   |
| 26811  | Atomizing Head Pressure Yellow 1.1          |
| 26814  | Atomizing Head Pressure Orange 1.4          |
| 26818  | Atomizing Head Pressure Clear 1.8           |
| <b>Atomizing Head Refill Kits - Gravity</b>  |   |
| 26712  | Atomizing Head Gravity - Blue 1.2           |
| 26713  | Atomizing Head Gravity - Green 1.3          |
| 26714  | Atomizing Head Gravity - Orange 1.4         |
| 26716  | Atomizing Head Gravity - Purple 1.6         |
| 26718  | Atomizing Head Gravity - Clear 1.8          |
| 26720  | Atomizing Head Gravity - Red 2.0            |



# Technical Data Sheet

Effective: 08/12/2020 Supersedes: NA

## 2) Description and end uses

Lightweight and easy to use, the 3M™ Performance Spray Gun was built for the modern painter. Capable of spraying a wide range of coatings from either a pressure-fed source or attached gravity cup, its impact-resistant composite body makes it one of the lightest spray guns available, yet it is durable enough for demanding industrial and automotive conditions. With its versatile design, technicians can spray from either a pressure or gravity sources. The pressure-fed hose and nozzles allow for continuous bulk spraying for larger jobs. Or for spot repairs and small areas, convert the spray gun to use the 3M™ PPS™ Series 2.0 Spray Cup System –so you use just the right amount of coating to match the size and finish of the job. Simple, innovative design means fewer parts to maintain. With quick-change replaceable nozzles, paint never passes through the body of the spray gun. Clean up can be as simple as wiping the tip of the needle and replacing the head – which means no more disassembling or soaking in solvent. It's like getting a brand-new spray gun every time you put on a fresh nozzle. At sizes from 1.1 to 2.0, 3M™ Performance Atomizing Heads allow you to easily spray a wide range of coatings –from stains and primers to topcoats and even adhesives. The spray gun's intuitive design means it's ready to help technicians spray right out of the box –whether you're a seasoned pro or if it's your first day on the job.

## 3) Physical Properties

| Element                | Material of construction                               |
|------------------------|--|
| Body                   | Glass Filled Nylon 66 (PA66)                           |
| Trigger                | Base: 304 SS Coating: TiC                              |
| Fluid Needle           | 17-4 SS  |
| Control Knobs          | Base: 6061 Alum Coating: Type III Black Anodize        |
| Air inlet              | Base: 316L SS Coating: TiC                             |
| Air flow control valve | Body: Aluminum Other: Varies                           |
| Nozzle                 | Air Cap, Body, Face: PP ; Barrel Seal: Nylon 66 (PA66) |
| Whip Hose              | Multilayer   |
| Ball Valve             | Body: Alum with Black Anodized coating, Handle: Brass  |
| Locking Collar         | Delrin (POM)   |



# Technical Data Sheet

Effective: 08/12/2020 Supersedes: NA

## Performance Properties

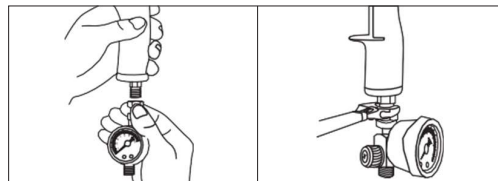
| Performance Spray Gun with Gravity Nozzles |                                 |
|--|---------------------------------|
| Air Consumption                            | 370 SLPM [13 SCFM]              |
| Max HVLP Operating Air Pressure            | 1.38 Bar [20 psi]               |
| Operating Pressure Range                   | 0.5 – 2.4 Bar [7-35psi]         |
| Maximum Operating Temperature              | 50 °C [122 °F]                  |
| Maximum Operating Overpressure             | 10 Bar [145 psi]                |
| Weight                                     | 238 g [8.4 oz]                  |
| Air Inlet                                  | 1/4 BSP/NPS                     |
| Nozzle Orifice Sizes                       | 1.2, 1.3, 1.4, 1.6, 1.8, 2.0 mm |

| Performance Spray Gun with Pressure Nozzles |                         |
|---|-------------------------|
| Air Consumption                             | 370 SLPM [13 SCFM]      |
| Max HVLP Operating Air Pressure             | 1.24 Bar [18 psi]       |
| Operating Pressure Range                    | 0.5 – 2.4 Bar [7-35psi] |
| Maximum Operating Temperature               | 50 °C [122 °F]          |
| Maximum Operating Overpressure              | 10 Bar [145 psi]        |
| Weight                                      | 378 g [13.3 oz]         |
| Air Inlet                                   | 1/4 BSP/NPS             |
| Liquid Inlet                                | 3/8 BSP/NPS             |
| Nozzle Orifice Sizes                        | 1.1, 1.4, 1.8, mm       |

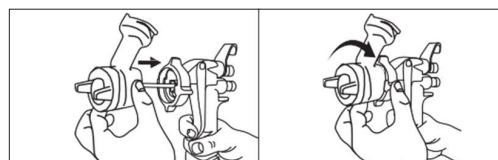
## 4) Directions for Use

### Gravity Assembly

- 1 Attach the supplied air flow valve to the bottom of the gun.



- 2 Attach the nozzle to the spray gun with the locking collar fully connected. *Note: It is easier to install the nozzle while pulling the trigger backward toward the spray gun handle. To remove the nozzle from the spray gun, reverse the process.*





# Technical Data Sheet

Effective: 08/12/2020 Supersedes: NA

- 3 Attach 3M™ PPS™ Series 2.0 spray cup to nozzle.



- 4 Once the spray gun is properly assembled you may attach the air line

### Nozzle Recommendation

\*Starting points only, refer to Paint Manufacture for recommendation on fluid tip size

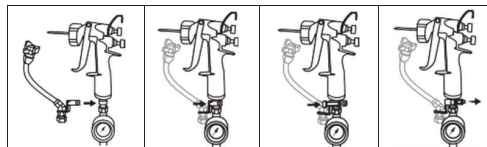
|                         | 2.0 | 1.8 | 1.6 | 1.4 | 1.3 | 1.2 |
|-------------------------|-----|-----|-----|-----|-----|-----|
| High Viscosity Coatings | ●   | ●   |     |     |     |     |
| Sprayable Fillers       | ●   | ●   |     |     |     |     |
| High Build Primer       |     | ●   | ●   | ●   |     |     |
| Primer Surfacer         |     | ●   | ●   | ●   |     |     |
| Wet on Wet Primer       |     |     |     | ●   | ●   |     |
| Primer Sealer           |     |     |     | ●   | ●   |     |
| Direct Gloss            |     |     |     | ●   |     |     |
| Single Stage Top Coat   |     |     |     | ●   |     |     |
| Solvent Base Color      |     |     |     | ●   | ●   |     |
| Clearcoat               |     |     |     | ●   | ●   | ●   |
| Waterborne Base Coat    |     |     |     |     | ●   | ●   |

## Pressure Assembly

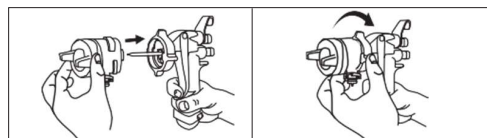
- 1 Attach the supplied air flow valve to the bottom of the gun.



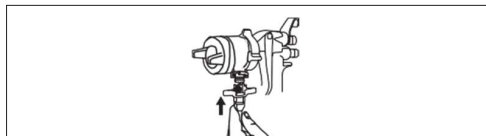
- 2 Attach Fluid Hose Pressure Whip to base of spray gun.



- 3 Attach the nozzle to the spray gun with the locking collar fully connected. *Note: It is easier to install the nozzle while pulling the trigger backward toward the spray gun handle*



4 Connect Pressure Whip to nozzle.



5 Attach fluid and pressure lines from bulk feed system (or pressure pot)

*Note: Utilize the optional manual fluid shut-off valve, if desired, between hose whip and fluid supply*

**Nozzle Recommendation**

\*Starting points only, refer to Paint Manufacture for recommendation on fluid tip size.

|                                    | 1.1 | 1.4 | 1.8 |
|------------------------------------|-----|-----|-----|
| Textured Paints                    | ●   | ●   | ●   |
| 1K Top Coats                       | ●   | ●   |     |
| 2K Top Coats                       | ●   | ●   |     |
| Base Coat / Single Stage Materials | ●   |     |     |
| Clear Coats                        | ●   | ●   |     |
| Epoxy / Urethanes Primers          | ●   | ●   | ●   |
| Adhesives                          |     | ●   | ●   |
| Release Agents                     | ●   |     |     |

## Cleaning

### Pressure

1. Once the system is adequately flushed (pot, lines), depressurize the system (or close the optional fluid valve)
2. After pressure is relieved, remove the hose whip from the nozzle.
3. Remove nozzle from spray gun to clean residue from the nozzle. Rinse out and flush cleaning solvent through the nozzle with fluid tip pointed straight down into receptacle to collect waste solvent.
4. Wipe needle tip. Store spray gun with a nozzle attached to protect the needle.

### Gravity

1. Once coating application is complete, disconnect the air hose from the gun.
2. To drain back paint into cup - Invert cup, pull trigger, and tap the PPS™ cup on a table 3 times.
3. Rinse out nozzle spout and flush cleaning solvent through the nozzle by pulling trigger with fluid tip pointed straight down into receptacle to collect waste solvent.
4. Store spray gun with a nozzle attached to protect the needle.

**WARNING!** Do not immerse spray gun or nozzles in cleaning solvents or gun washers. The operating pressure range of this spray gun is listed on the face of each replacement nozzle



# Technical Data Sheet

Effective: 08/12/2020 Supersedes: NA

## 5) Storage

Ensure equipment is cleaned prior to storage.  
Store spray gun with a nozzle attached to protect the needle.

## 6) Safety

Before using this product, reference and understand the Product Label and Product Manual for Health and Safety Information. Consult all Safety Data Sheets for chemical material used with this product. Follow all local regulations for use and disposal of all items/products associated with the use of this product.

**3M™ Performance Spray Gun is designed FOR PROFESSIONAL INDUSTRIAL USE ONLY.**

## 7) Disclaimer

All statements, technical information and recommendations are based on tests we believe to be reliable as at the date of hereof, but the accuracy or completeness thereof is not guaranteed. Please ensure before using the product that it is suitable for your intended use. Since the conditions and methods of use of the product and of the information referred to herein are beyond our control, other than for fraudulent misrepresentation, 3M expressly disclaims any and all liability as to any results obtained or arising from any use of the product or reliance on such information.



# Technical Data Sheet

Effective: 08/12/2020 Supersedes: NA

For Additional Health and Safety Information

|  |
|--|
| 3M South Africa & Sub-Saharan Africa, 146A Kelvin Drive, Woodmead, Sandton, South Africa, Tel: (0861) 225536   |
| 3M (East) AG Representation Office Tirane, Rruga Sami Frasheri, Pallati i Ri Perxhola Kati 2 Ap2, 1000 Albania   |
| 3M Arabia, LLC, Building 24-25 3M Saudi Arabia Zone C, Business Gate, Airport Road, Riyadh, Saudi Arabia   |
| 3M Bulgaria, Mladost 4, Business Park, bl.4, 2nd floor, Sofia 1766, Bulgaria   |
| 3M Česko, spol. s r.o., V Parku 2343/24, 148 00 - Praha 4, Czech Republic  |
| 3M (East) AG, Branch office Croatia, Avenija Većeslava Holjevca 40, 10 000 Zagreb, Croatia, Tel: +385 1 2499750, <a href="http://www.3m.com.hr">www.3m.com.hr</a>  |
| 3M Egypt, Finance Center , New Cairo , Plot 140 , Banking Sector , 5th settlement , Cairo , Egypt  |
| 3M Hellas MEPE, Automotive Aftermarket Division, 20 Kifisias Avenue, 151 25 Marousi, Greece, Phone: +30 210 68 85 300, <a href="mailto:innovation.gr@mmm.com">innovation.gr@mmm.com</a> , <a href="http://www.3M.gr">www.3M.gr</a>             |
| 3M Hungária Kft, Neumann János u. 1/E, 1117 Budapest, Hungary  |
| 3M Israel, 91 Medinat Hayehudim St., Herzliya, Israel  |
| 3M Kenya Ltd, Victoria Towers, 3rd Floor, Kilimanjaro Av, Upperhill, Kenya   |
| 3M Gulf Limited, Ein El Mreisseh, Saint Charles City Center, 4th. Floor, P.O.Box: 11-5025, Riad el Solh, Beirut 1107 2180 Lebanon  |
| 3M Minnesota Mining & Manufacturing Nigeria Limited, No 2 Sheraton Opebi Link Road, Ikeja, Lagos Nigeria   |
| 3M Pakistan, Islamic Chamber of Commerce Building, ST-2/A, Block 9, KDA Scheme 5, Clifton, Karachi, Pakistan   |
| 3M Poland, Al. Katowicka 117, Kajetany, 05-830 Nadarzyn, Poland, Telefon: +48 22 739 60 00, <a href="http://www.3m.pl/kontakt">www.3m.pl/kontakt</a>   |
| 3M Gulf (Representation Office), Suhaim Bin Hamad St., Al Mana Towers Tower B, 2nd Floor, Office No.4, Doha Qatar, P.O.Box 14685   |
| 3M Romania, 12 Meneuului St., Bucharest Business Park, Building D, District 1 013713 Bucharest, Romania  |
| 3M (East) AG, Representation Office Serbia, Airport City, Omladinskih brigada 90B, 11070 Belgrade, Serbia, Tel: +381 11 2209 400, <a href="http://www.3m.co.rs/3M/sr_RS/3m-south-east-europe/">www.3m.co.rs/3M/sr_RS/3m-south-east-europe/</a> |
| 3M Slovensko s.r.o., Polus Tower 2, Vajnorská 100/B, 83104 Bratislava  |
| 3M (East) AG, Branch office Slovenia, Cesta v Gorice 8, 1000, Ljubljana, Slovenia, Tel: +386 1 2003 630, <a href="http://www.3m.com/3M/sl_SI/3m-south-east-europe/">www.3m.com/3M/sl_SI/3m-south-east-europe/</a>                              |
| 3M Sanayi ve Ticaret As, Barbaros Mah., Mor Sümbül Sok., No:7/3F, 27-51, Nidakule Ataşehir Güney, 34746 Ataşehir, İstanbul, Turkey   |
| 3M Gulf Limited, Dubai Internet City, Building No. 11, 3rd Floor, U.A.E  |

3M and PPS are trademarks of 3M Company, © 3M 2020, All rights reserved.