



DRIVING SURFACE PERFECTION™

TECHNICAL DATA SHEET

Version 1.0

8/8/2018

RAPTOR 2K Bedliner Aerosol



TECHNICAL DATA SHEET & PROCESS GUIDE

The convenient RAPTOR 2K Bedliner Aerosol offers a fast, easy way to apply RAPTOR without compromising performance, no spray equipment necessary. Ideal for spot repairs and small jobs. More than just a bed liner, RAPTOR is a highly durable and tough protective coating. Use RAPTOR on a variety of surfaces that need a protective barrier that withstands the toughest situations. Using RAPTOR is easy - Now you can spray RAPTOR 2K Bedliner Aerosol for a no mess, no clean-up application.

FEATURES

DURABLE

2K performance gives a tough surface that also protects against rust and corrosion.

UV RESISTANT

High level of fade resistance.

WATER RESISTANT

Provides a water resistant finish, keeping moisture out and reducing rust.

TEXTURED

A range of textures can be created from one can.

QUICK & EASY TO USE

Ideal for both consumers and professionals.

Easy to activate. No measurements and no gun to clean.

SUBSTRATES AND PREPARATION



Substrates

- Original Paint
- Aluminum*
- Bare Metal*
- Galvanized*
- Polyester Fillers
- Rigid Plastic*
- Fiberglass
- E-coat*
- Wood*

* See Substrate Preparation section for details.



Substrate Preparation

To achieve best results with RAPTOR, good preparation is essential.

1. Remove all loose material and any rust from the surface to be coated.
2. Clean and degrease the surface.
3. Abrade the surface with the required grit sand paper (see below).
4. Re-clean the surface.
5. For hard to reach areas, like internal corners, etc., coat first with Raptor Adhesion Promoter, for optimal adhesion.

- * Metals: Abrade with: Bare metal P80-180; Aluminum/Galvanized P120-180
Localized rub-thrus: prime with Raptor Acid Etch Primer.
Exposed areas of bare metal: Prime with RAPTOR Epoxy Primer Aerosol required for optimum adhesion and corrosion resistance.
- * Rigid Plastic (ABF, SMC) and fiberglass: Abrade with P120-180. Clean and degrease.
- * Flexible Plastic (TPO, EDPM, & PP): Abrade with P180-320 grit. Clean and degrease. Coat first with UP5024 Raptor Adhesion Promoter.
- * OEM E-Coat: Scuff the surface with an coarse abrasive pad then clean and degrease.
- * Wood: RAPTOR can be applied to clean, dry wood.



Mixing and Activation

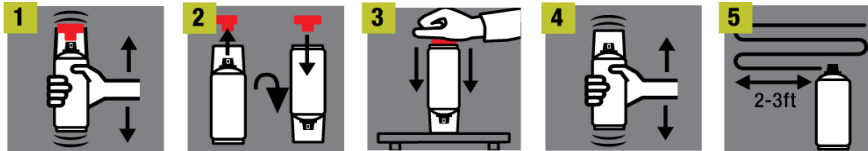


DRIVING SURFACE PERFECTION™
TECHNICAL DATA SHEET

Version 1.0

8/8/2018

RAPTOR 2K Bedliner Aerosol



1. Shake can for two minutes before activation.
2. Remove the button from under the instruction leaflet on the cap. Turn the can upside down and fit the button onto the pin in the base of the can.
3. With the cap still on, place the can on a firm surface. Push the button all the way down with the palm of your hand to release the activator into the aerosol.
4. Shake can for two minutes before use.

TIP: Q How do I know if I have activated the RAPTOR 2K Epoxy Primer aerosol can?

A The push button can easily be pushed in with minimal resistance.

Once activated, the pot life is approximately 60 minutes. Discard remaining product after 60 minutes.



Coats

Recommended to first do a test application to determine the desired texture.

Minimum of 2 coats required at 2-3 ft from the surface.

How to create common textures

Flat, rippled texture:

- 1 Apply a heavy coat from a distance of 1 metre, moving slowly across the panel with a steady, even motion, overlapping each pass to create a continuous film.
- 2 Turn can upside down and spray to clear the valve.
- 3 After 20 minutes, apply a second coat just like the first.
- 4 Turn can upside down and spray to clear the valve.



TIP: Be careful that the application is not too heavy or heavy build around edges may occur.

Coarse ripple texture:

- 1 Apply a heavy coat from a distance of 1 metre, moving slowly across the panel with a steady, even motion, overlapping each pass to create a continuous film.
- 2 Turn can upside down and spray to clear the valve.
- 3 After 20 minutes, apply a lighter second coat at a greater distance away moving faster across the panel.
- 4 Turn can upside down and spray to clear the valve.





DRIVING SURFACE PERFECTION™

TECHNICAL DATA SHEET

Version 1.0

8/8/2018

RAPTOR 2K Bedliner Aerosol



Smooth fine silky texture:

- 1 Apply a light coat from a distance of 1 metre moving quickly across the panel.
- 2 Turn can upside down and spray to clear the valve.
- 3 After 20 minutes, apply a second coat just like the first.
- 4 Turn can upside down and spray to clear the valve.



Matte rough texture:

- 1 Apply a continuous light drop coat from a distance of 1 metre until opacity is achieved
- 2 Turn can upside down and spray to clear the valve.
- 3 After 20 minutes, apply a second very light coat from a greater distance to even out the texture.
- 4 Turn can upside down and spray to clear the valve.



TIP: If the finish looks patchy a subsequent coat can be applied to blend in the finish.

Build / microns 200µ depending on texture for 2-coats

Theoretical Coverage approx. 1.3m² depending on texture



Flash-off / min @ 20°C

between coats

20 mins



Drying Times

Handling time @ 20°C

<60 minutes

Through Dry @ 20°C

5-7 days



DRIVING SURFACE PERFECTION™

TECHNICAL DATA SHEET

Version 1.0

8/8/2018

RAPTOR 2K Bedliner Aerosol



STORAGE & VOC INFORMATION



Shelf Life

3 years subject to good storage conditions.

Aerosol cans should be stored for two hours at room temperature before use. For long term storage, keep in a dry well ventilated area and away from direct sunlight and frost. To clear the nozzle and maximise the lifespan of your aerosol, always invert the can and spray upside down for a few seconds after each use. Should the nozzle become blocked, remove it from the can and soak it in gentle thinners.

Recommended Storage Temperature 5°C - 25°C

Recommended Application Temperature 20°C



VOC Information

The EU limit for these products (product category: IIB.(e) in ready to use form is 840 g/litre. The VOC content of this product in ready to use form is 526 g/litre.

Order Code	Format	Color	VOC g/l
RLB/AL	400ml Aerosol	Black	526

IMPORTANT: Read full instructions before use.

This product contains hazardous materials and therefore appropriate personal protective equipment should always be used. Please refer to the label and consult the safety data sheet for full handling instructions and personal protection information. U-POL disclaims any liability where the user does not wear the recommended personal protective equipment. The above data is for information only and may change without prior notice. It is the Buyers responsibility to ensure the suitability of the products for their own use and check the information is up to date. The recommendation of use of our products and application in our technical data sheets are based on our knowledge and experience. These data sheets are available via your local distributor or via the U-POL website at WWW.U-POL.COM. U-POL is not responsible for the results obtained by others over whose methods we have no control and thereof U-POL is not liable for consequential or incidental damages including loss of profits.

U-POL Ltd

4th Floor, The Grange, 100 High Street
London, N14 6BN
WWW.U-POL.COM

UK Sales

T: +44 (0)20 8492 5920
F: +44 (0)20 8150 5605
uk.sales@u-pol.com

Rest of the World Sales

T: +44 (0)20 8492 5900
F: +44 (0)20 8150 5605
sales@u-pol.com

Technical

T: +44 (0)1933 230 310
F: +44 (0)1933 425 797
technicaldepartment@u-pol.com